

Aerification not only increases air space in the soil. It breaks up existing layers and keeps layers from forming.

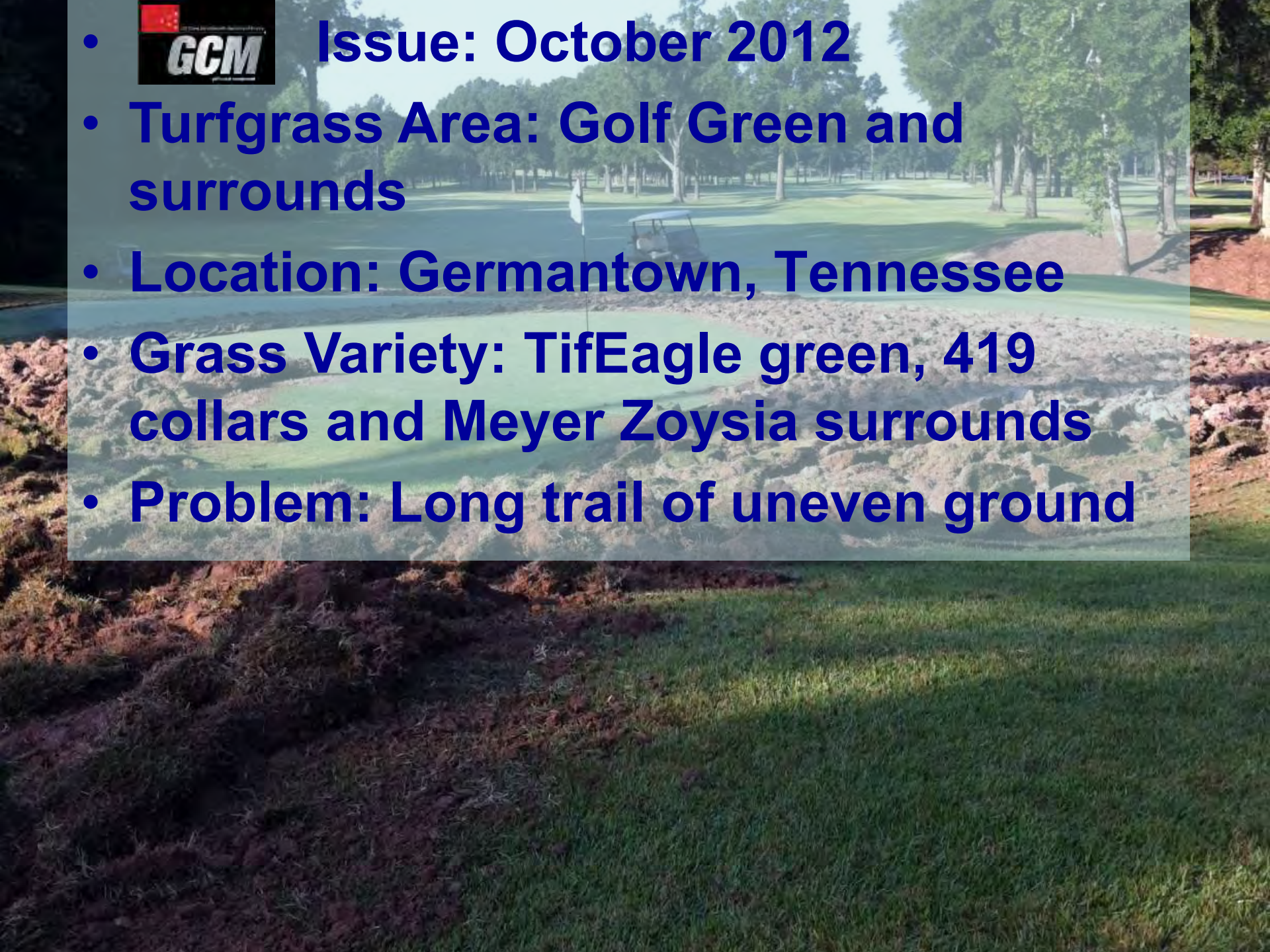
Aerification also improves *infiltration!*



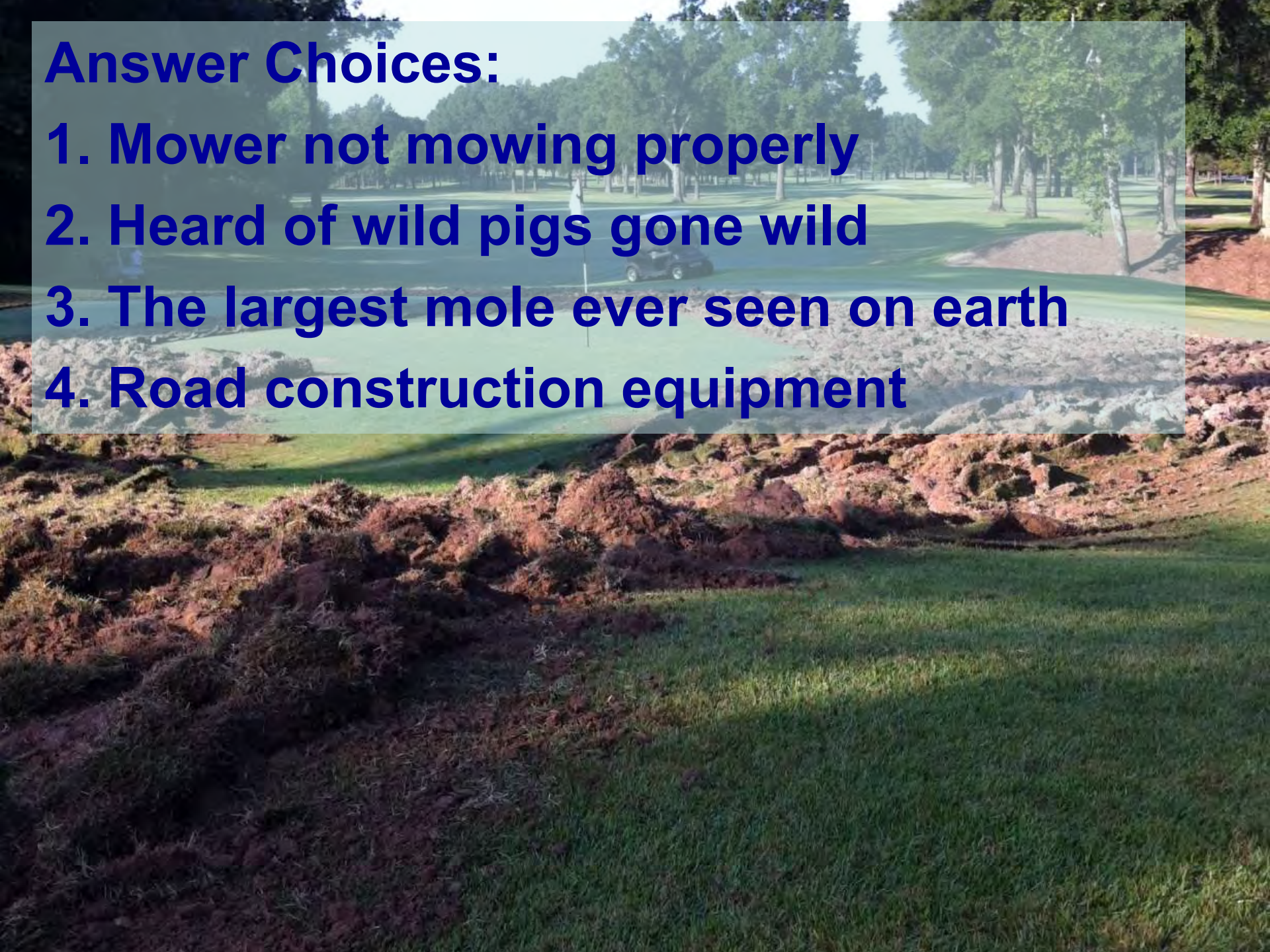
Core Aerification is the **only** activity on Turf that will improve the soil structure ... other than rebuilding.



- **Issue: October 2012**
- **Turfgrass Area: Golf Green and surrounds**
- **Location: Germantown, Tennessee**
- **Grass Variety: TifEagle green, 419 collars and Meyer Zoysia surrounds**
- **Problem: Long trail of uneven ground**



Answer Choices:

- 1. Mower not mowing properly**
 - 2. Heard of wild pigs gone wild**
 - 3. The largest mole ever seen on earth**
 - 4. Road construction equipment**
- 
- A photograph of a golf course. In the foreground, there is a large, messy pile of brown mulch or grass clippings. In the background, a green golf course is visible with a dark-colored car parked on a path. A person in a white shirt is standing near the car. The background is filled with tall, green trees under a clear sky.

Answer # 4 - Someone left their keys in this tractor overnight





*** Photo Submitted by Doug Estes, Golf Course Superintendent at
Germantown Country Club in Germantown, Tennessee
GCM Oct 2012**



*** Photo Submitted by Doug Estes, Golf Course Superintendent at
Germantown Country Club in Germantown, Tennessee
GCM Oct 2012**



Issue: May 2015

- **Turfgrass Area: Golf Green**
- **Location: Gaylord, Michigan**
- **Grass Variety: Bentgrass / Poa blend**
- **Problem: Soil on top of green**



Top of this hill – man made lake

An aerial photograph of a golf course green and sand trap. The green is on the left, and the sand trap is in the center. A light blue arrow points from the text 'Green' to the green. Another light blue arrow points from the text 'Uphill Lake' to the sand trap. The surrounding area is densely forested with green trees. In the background, rolling hills are visible under a clear sky.

Green

**Uphill
Lake**



May 2015

Man made lake has to be manually filled



Photo submitted by Doug Hoeh, the North Superintendent /Mountain Manager at Treetops Resort in Gaylord Michigan.



May 2015

One day the Assistant Superintendent
...and left the water on all night
was filling it



Photo submitted by Doug Hoeh, the North
Superintendent /Mountain Manager at Treetops
Resort in Gaylord Michigan.



May 2015

**...the bank washed away, spilling the
lake and hillside down on the golf green
located below**



**Photo submitted by Doug Hoeh, the North
Superintendent /Mountain Manager at Treetops
Resort in Gaylord Michigan.**



May 2015



Green

**Photo submitted by Doug Hoeh, the North
Superintendent /Mountain Manager at Treetops
Resort in Gaylord Michigan.**



May 2015

The entire crew pitched in with the rebuild



Photo submitted by Doug Hoeh, the North Superintendent /Mountain Manager at Treetops Resort in Gaylord Michigan.



May 2015

... and the green debris removal...



Photo submitted by Doug Hoeh, the North Superintendent /Mountain Manager at Treetops Resort in Gaylord Michigan.



May 2015

... and the green cleaning...



Photo submitted by Doug Hoeh, the North Superintendent /Mountain Manager at Treetops Resort in Gaylord Michigan.



May 2015

The hole was open for play 24 hours later



Photo submitted by Doug Hoeh, the North Superintendent /Mountain Manager at Treetops Resort in Gaylord Michigan.



May 2015

... 24 hours later ... Teamwork !!



Photo submitted by Doug Hoeh, the North Superintendent /Mountain Manager at Treetops Resort in Gaylord Michigan.



May 2015

Mower operators who will mow no matter how much rain you have





**Golfers
who have
to finish
a
round....**

Moles on caffeine



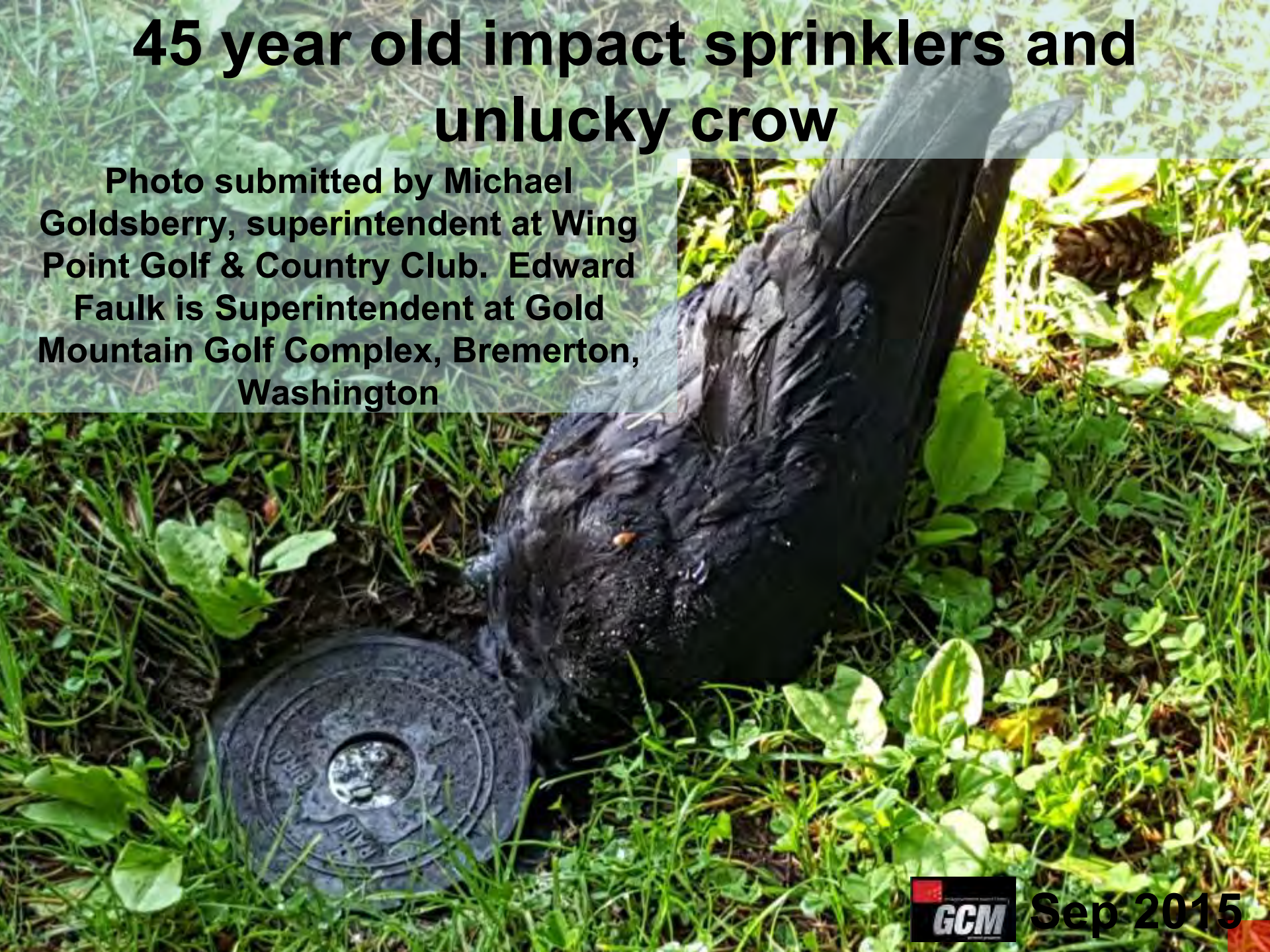


- **Issue: September 2015**
- **Turfgrass Area: Rough**
- **Location: Bremerton Washington**
- **Grass Variety: Rye / Poa / Other**
- **Problem: Crow very still**



45 year old impact sprinklers and unlucky crow

Photo submitted by Michael
Goldsberry, superintendent at Wing
Point Golf & Country Club. Edward
Faulk is Superintendent at Gold
Mountain Golf Complex, Bremerton,
Washington





Issue: November 2015

- **Turfgrass Area: Target green on driving range**
- **Location: Sylacauga, Alabama**
- **Grass Variety: Bermudagrass**
- **Problem: Soil exposed and turf lifted**



Answer Choices:

1. Yet another airplane crash
2. Lightning
3. Worst divot ever
4. I have no idea, check please!



Answer # 2 - Lightning



Photo submitted by Tim Spanjer, Director of Marketing at Pursell Farms, Mark Langner is Superintendent at FarmLinks Golf Club in Sylacauga, Alabama.



Nov 2015

Lightning



*Photos submitted by Jason Stewart, Assistant Superintendent, Brickyard Crossing, Speedway, Indiana



Sep 2003

Lightning on Greens





*Photo submitted by Sue DeZwart, Talking Turf Consulting Co, Mpumalanga, South Africa. (December 2007 GCM Issue)

Lightning – Hit target green flag...



Photo submitted by Tim Spanjer, Director of Marketing at Pursell Farms, Mark Langner is Superintendent at FarmLinks Golf Club in Sylacauga, Alabama.



Nov 2015

Blew 120 foot long trench 2-3 feet deep and 6-8 inches wide along irrigation pipe & blew out control boxes 300 yds away



Photo submitted by Tim Spanjer, Director of Marketing at Pursell Farms, Mark Langner is Superintendent at FarmLinks Golf Club in Sylacauga, Alabama.



Nov 2015

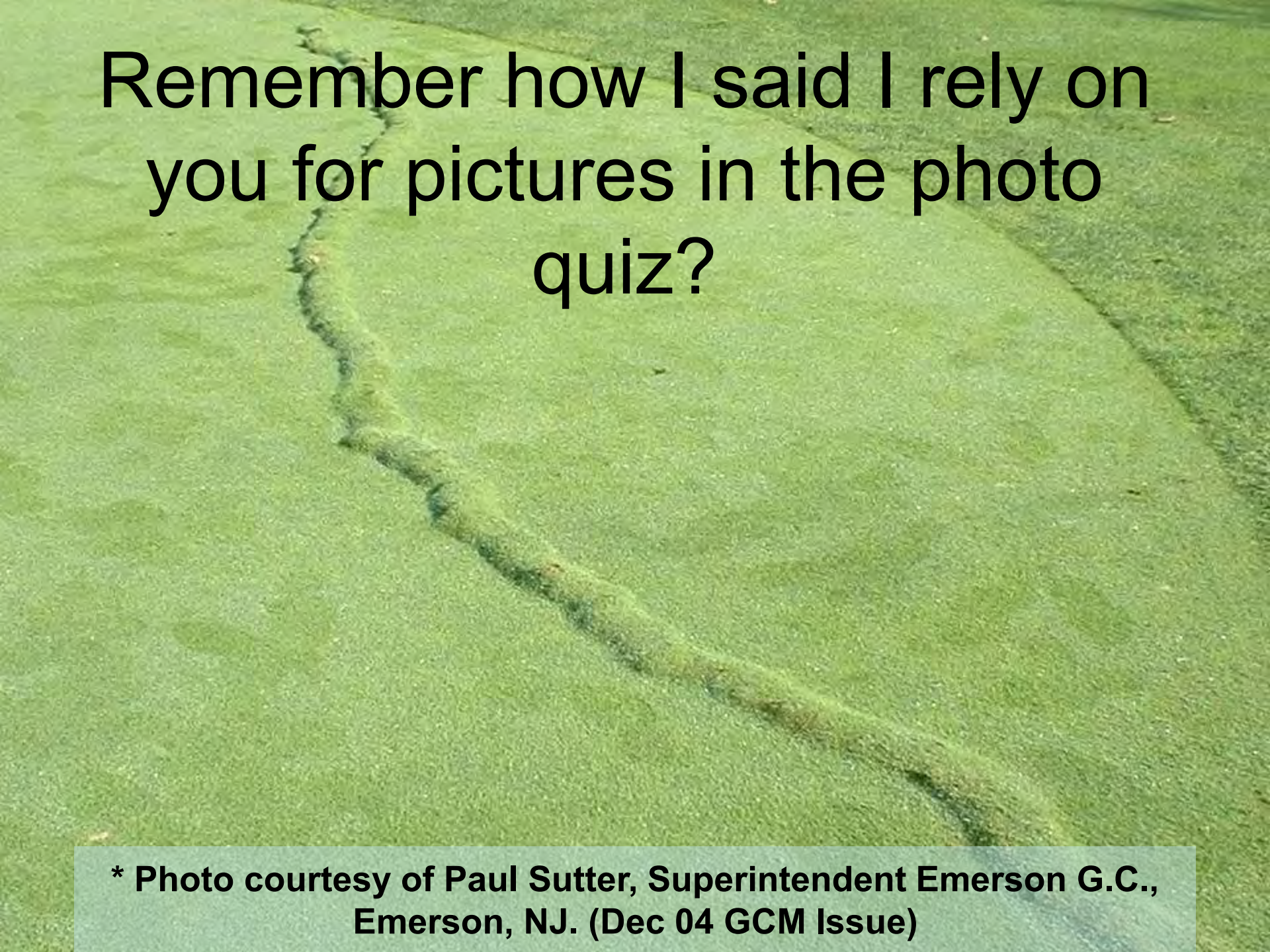
-  Issue: August 2003
- Turfgrass Area: Fairway
- Grass Variety: Bentgrass
- Problem: Small dead area on turf with green footprints





Answer: Insect repellent

Photo Courtesy Rick Tegtmeier, CGCS at Elmcrest CC, Cedar Rapids, IA.

An aerial photograph of a golf course green. The green is a vibrant, well-maintained green color. A dark, irregularly shaped bunker is visible on the left side of the green. The surrounding area is also green, likely other parts of the golf course.

Remember how I said I rely on
you for pictures in the photo
quiz?

*** Photo courtesy of Paul Sutter, Superintendent Emerson G.C.,
Emerson, NJ. (Dec 04 GCM Issue)**

Photo Courtesy Jim Popielarczyk,
Liverpool GC, Liverpool NY.

Creeping Bentgrass - Green

**Gary Morris, Superintendent - Ole Miss GC -
Oxford, MS**



Bermudagrass - Tee

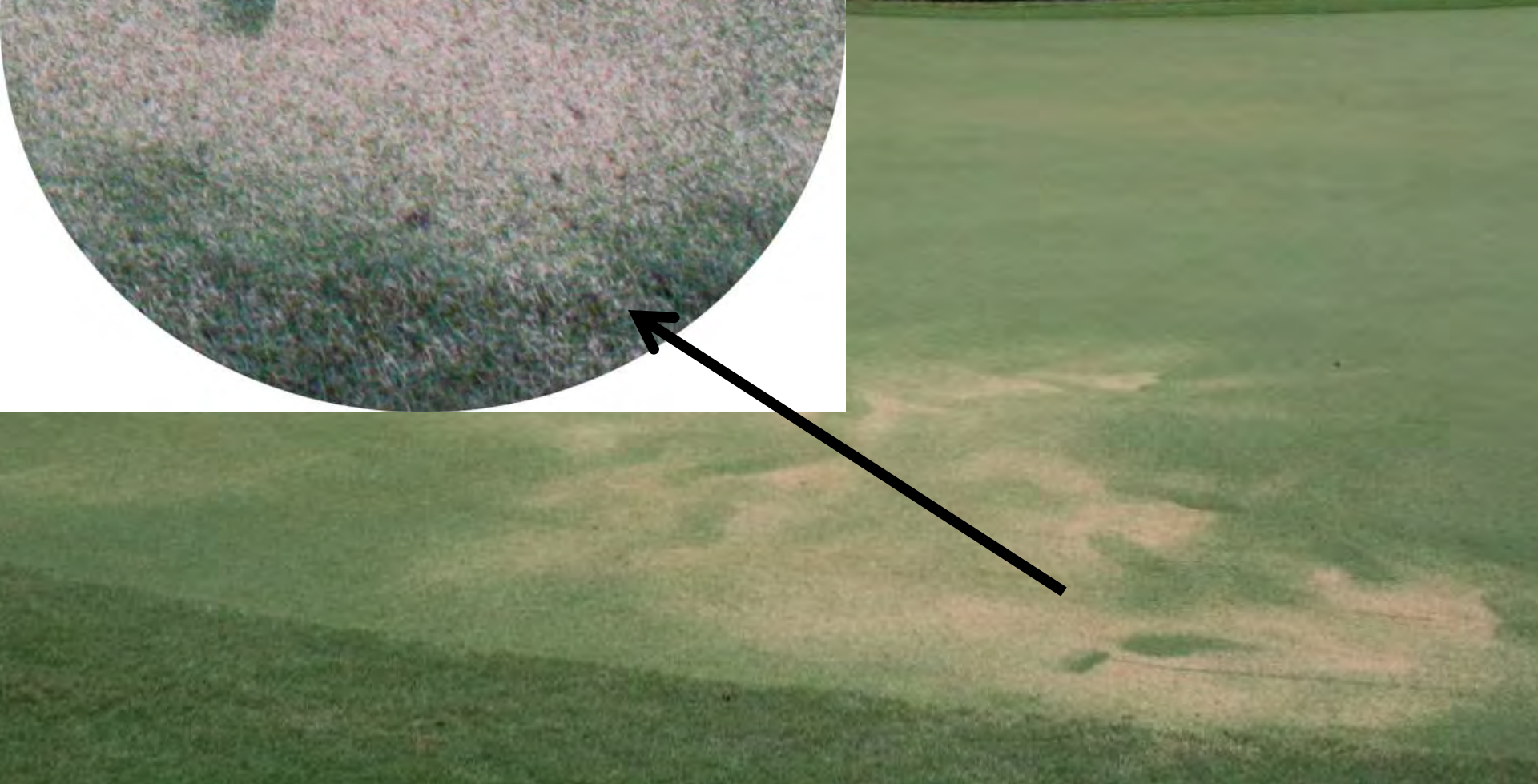
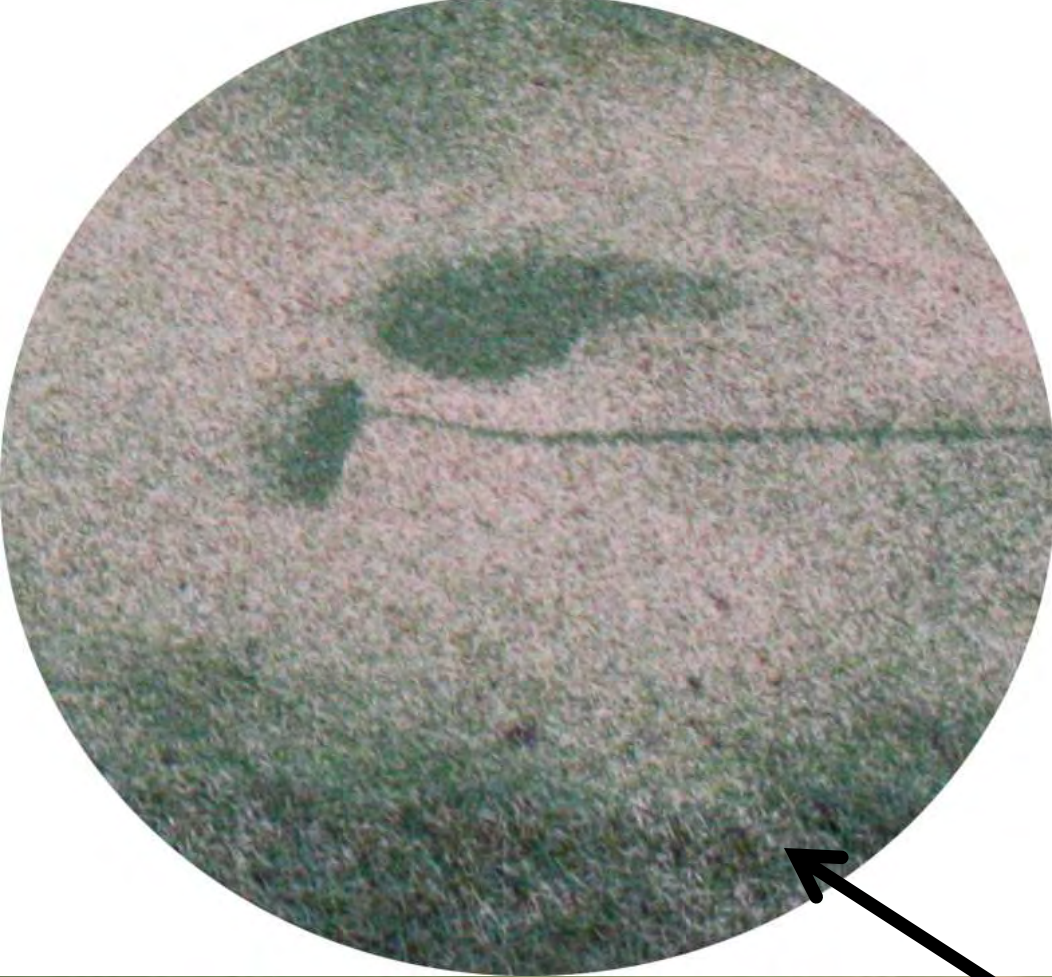
Photo submitted by Michael Schuhmann, Assistant Golf Course Superintendent at the Country Club of Jackson (MS) Stanley Reedy, CGCS is superintendent.



Jan 2012



Bermudagrass Green





Boy scout jamboree and insect repellent



Photo

Courtesy

Dan Douglas

SportsTurf Dec 2010

Wedding party / insect repellent

Photo submitted by Dave Alder, Southwest District Park Supervisor for the City of Lincoln Nebraska, Parks and Recreation Department.



Tall Fescue

SportsTurf 10 7:40 AM
Sept 2007



Issue: April 2016

- **Turfgrass Area: Golf Green**
- **Location: Austria**
- **Problem: Straight line of scarred turf after flood waters receded**




Boat propeller damage while green was under water

Hint



Apr 2016



When you see things like this, you figure it's a once in a lifetime photo ... right?

Hurricane Harvey Aug 2017 hit Houston with 50+ inches of rain



Photo submitted by Andy Coz, Golf Course Superintendent at Timber Creek Golf Club in Friendswood, Texas.



Dec 2017

Overfilled irrigation ponds

Photo courtesy of Tim Legare, CFSM at the City of Callaway, Callaway, Florida.



Dry tractor radiators



Photo by Gary Morris, Superintendent -
Ole Miss GC - Oxford, MS

Topdressing sand angels



Street Art

