

A photograph of a golf course area. In the foreground, there is a wide, dark brown dirt path or clearing. To the left and right of the path, there are several large, dark, cylindrical objects that appear to be tree stumps or logs. In the background, there is a green lawn and several trees with green foliage. The sky is not visible.

***Zoysia* Shade – July 2017**

East Lake Golf Course

A photograph of a golf course green, likely a putting green, with a title overlay. The green is a vibrant green color and is surrounded by a dark brown mulch border. In the background, there are several trees and a white sand trap. The title "Zoysia Shade – July 2017" is written in a bold, black, sans-serif font and is centered at the top of the image.

***Zoysia* Shade – July 2017**

East Lake Golf Course



***Zoysia* Shade – September 2017**

East Lake Golf Course

A photograph of a golf course. In the foreground, a large, dark shadow of a tree is cast across a green lawn. The shadow is irregular in shape, following the contours of the grass. In the background, there are several trees with green and some autumn-colored leaves. A golf course green is visible in the distance. The overall scene is bright and sunny.

***Zoysia* Shade – October 2017**

East Lake Golf Course


***Zoysia* Shade – December 2017**

East Lake Golf Course



***Zoysia* Shade – January 2018**

East Lake Golf Course



***Zoysia* Shade – February 2018**

East Lake Golf Course

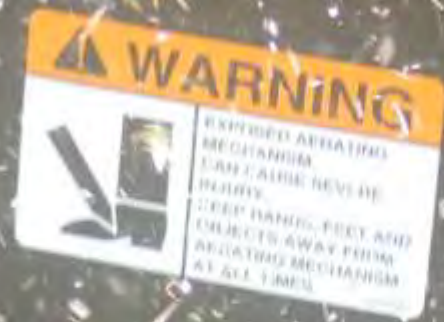
Wear Trials



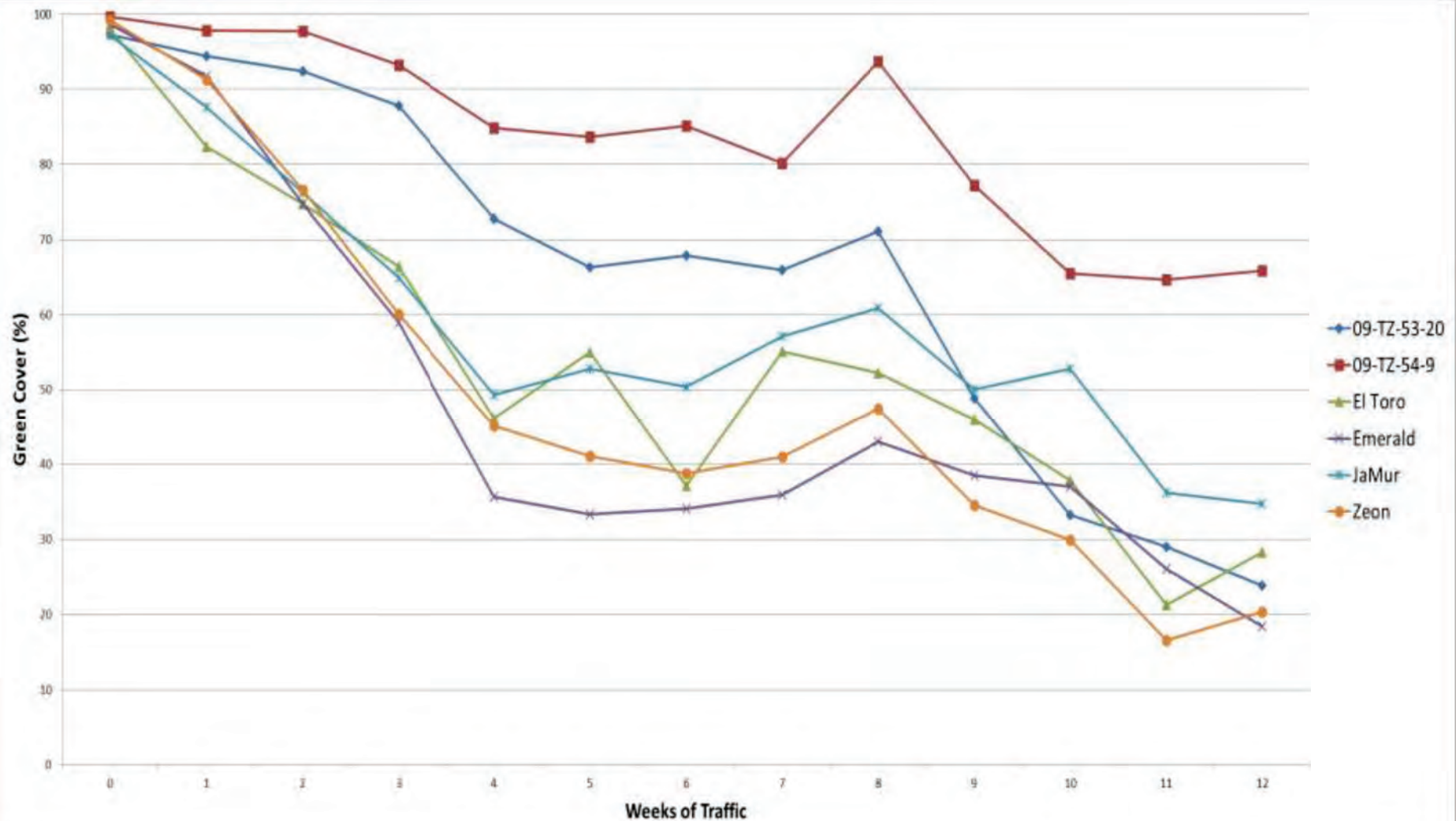
Wear Trials







Wear Trials



July 27th
2017



August 11th
2017



**August 17th
2017**





Bermudagrass Breeding

Tifton, GA

Bermudagrass Breeding



Tifton, GA

An aerial photograph of a large field used for bermudagrass breeding. The field is divided into numerous rectangular plots of varying sizes. Each plot contains a different variety of grass, creating a mosaic of colors ranging from vibrant green to brown and tan. The plots are separated by narrow, light-colored paths or ditches. In the upper left corner, the lower leg and foot of a person wearing blue jeans and a dark shoe are visible, standing on one of the plots. The overall scene is brightly lit, suggesting a sunny day.

Bermudagrass Breeding

Tifton, GA

Bermudagrass Breeding

The image shows a large, open grassy field, likely a golf course or a large lawn. The grass is a mix of green and yellowish-brown, suggesting some dryness or a specific grass type. In the background, there are trees and a few parked cars. A semi-transparent white box at the top contains the title "Bermudagrass Breeding" in bold black text. Another semi-transparent white box at the bottom left contains the text "Tifton, GA" in bold black text.

Tifton, GA

An aerial photograph of a large agricultural field used for bermudagrass breeding. The field is divided into numerous rectangular plots of varying sizes, separated by dirt paths. The grass in the plots is a vibrant green, contrasting with the brownish-tan soil of the paths. In the background, a long, low building with a white roof and several windows is visible, along with a few parked vehicles. A black fence with white 'LOWE'S' logos runs along the edge of the field. A semi-transparent white box with black text is overlaid on the upper portion of the image.

Bermudagrass Breeding

Tifton, GA

Bermudagrass Breeding



Sandhills, NC

Bermudagrass Breeding

A wide-angle photograph of a large, flat, green field, likely a golf course or a large lawn. The field is covered in lush green grass. There are several rectangular plots of bare, reddish-brown soil scattered across the field, which appear to be areas where the grass has been removed or is in the process of being planted. In the background, there are some trees and a cloudy sky.

Marshallville, GA





