

Made in the Shade?



Jonathon Fox- Graduate Student
Brian Schwartz- Associate Professor

Why study for shade tolerance?

- Photosynthesis is reduced
- Longer, thinner, low density leaf blades
- Vertical growth habit
- Decreased lateral growth
- Reduced turf quality



Shade Study

- Funded by 2 USDA-SCRI grants (2010 & 2015)
- Bermudagrass, St. Augustinegrass, and Zoysiagrass
- Cultivars and experimental grasses used from NC State, OSU, Texas A&M, UF, and UGA



Shade Study

- Bermudagrass- Celebration, Latitude 36, TifGrand, TifTuf, and Tifway
- St. Augustinegrass- Floratam, Palmetto, and Raleigh
- Zoysiagrass- Empire, Palisades, and Zeon

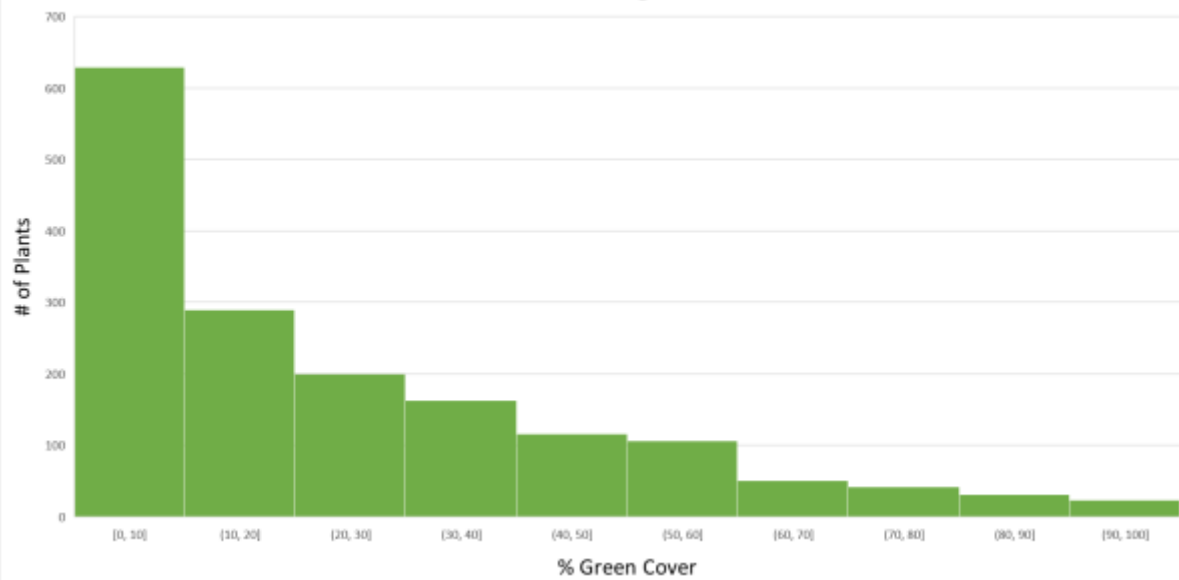


Materials & Methods

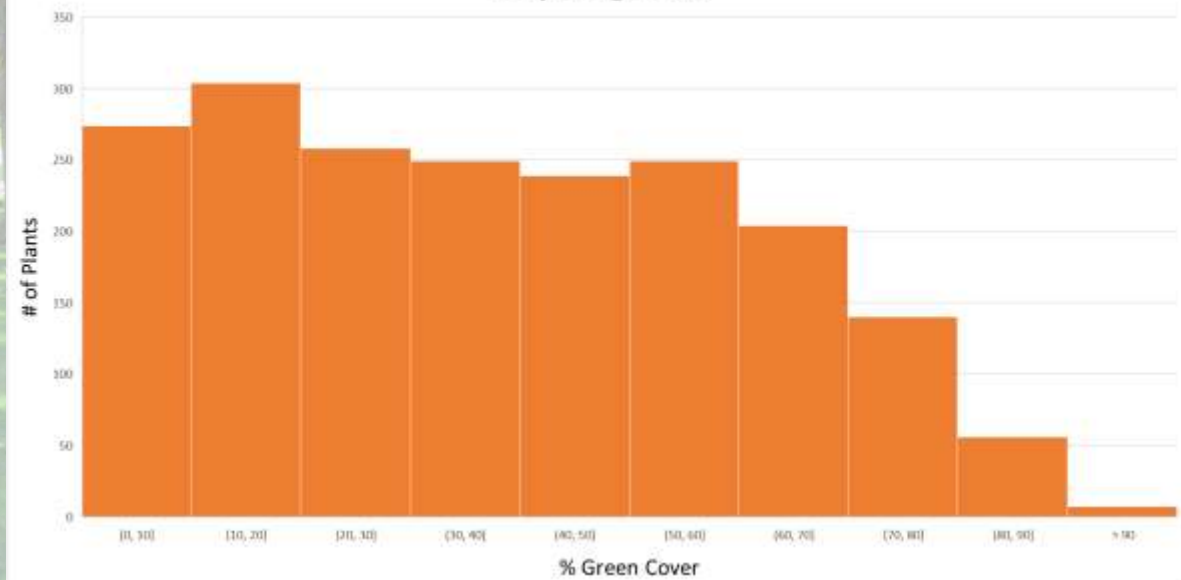
- Planted as a single plug in 5 replications on 3ft centers
- 6 mobile shade structures at 73% shade
- Routine Maintenance
- Digital Image Analysis and canopy heights



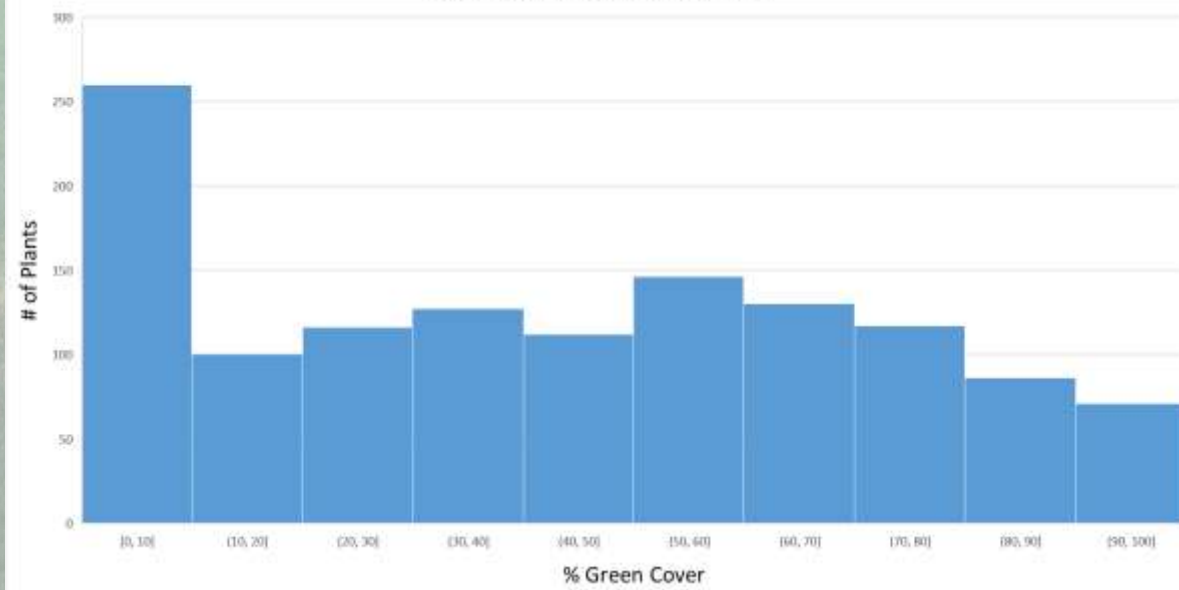
Bermudagrass



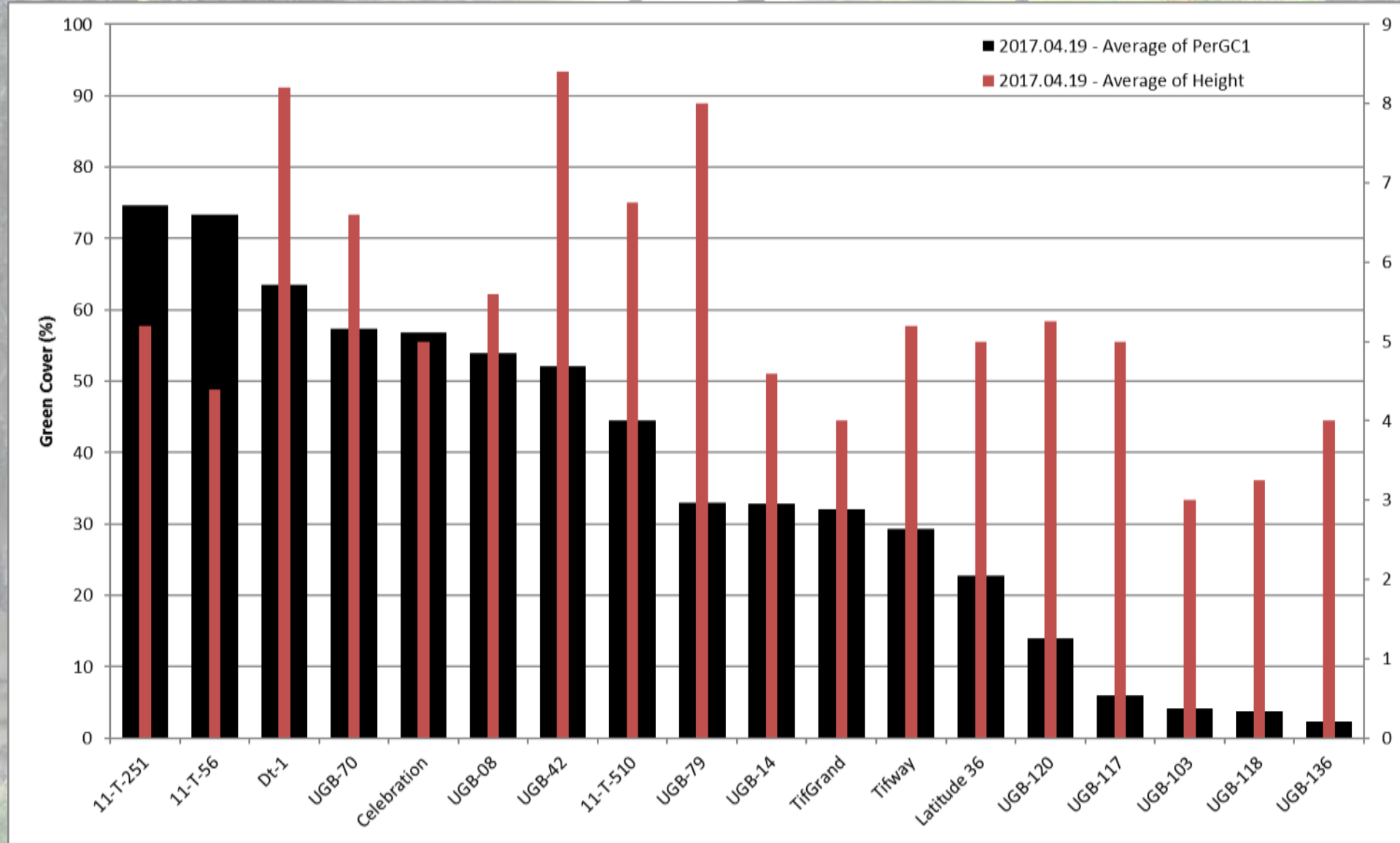
Zoysiagrass



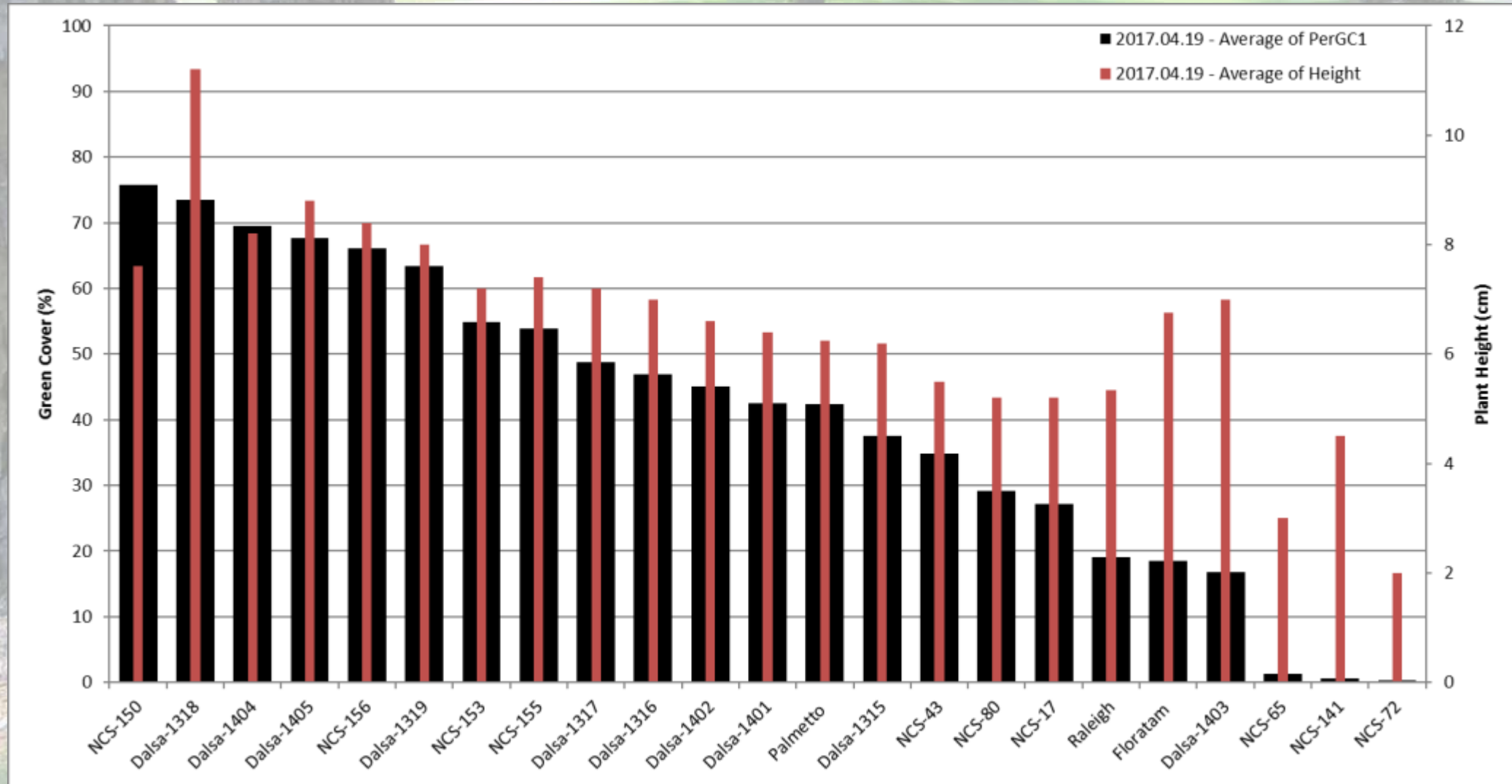
St. Augustinegrass



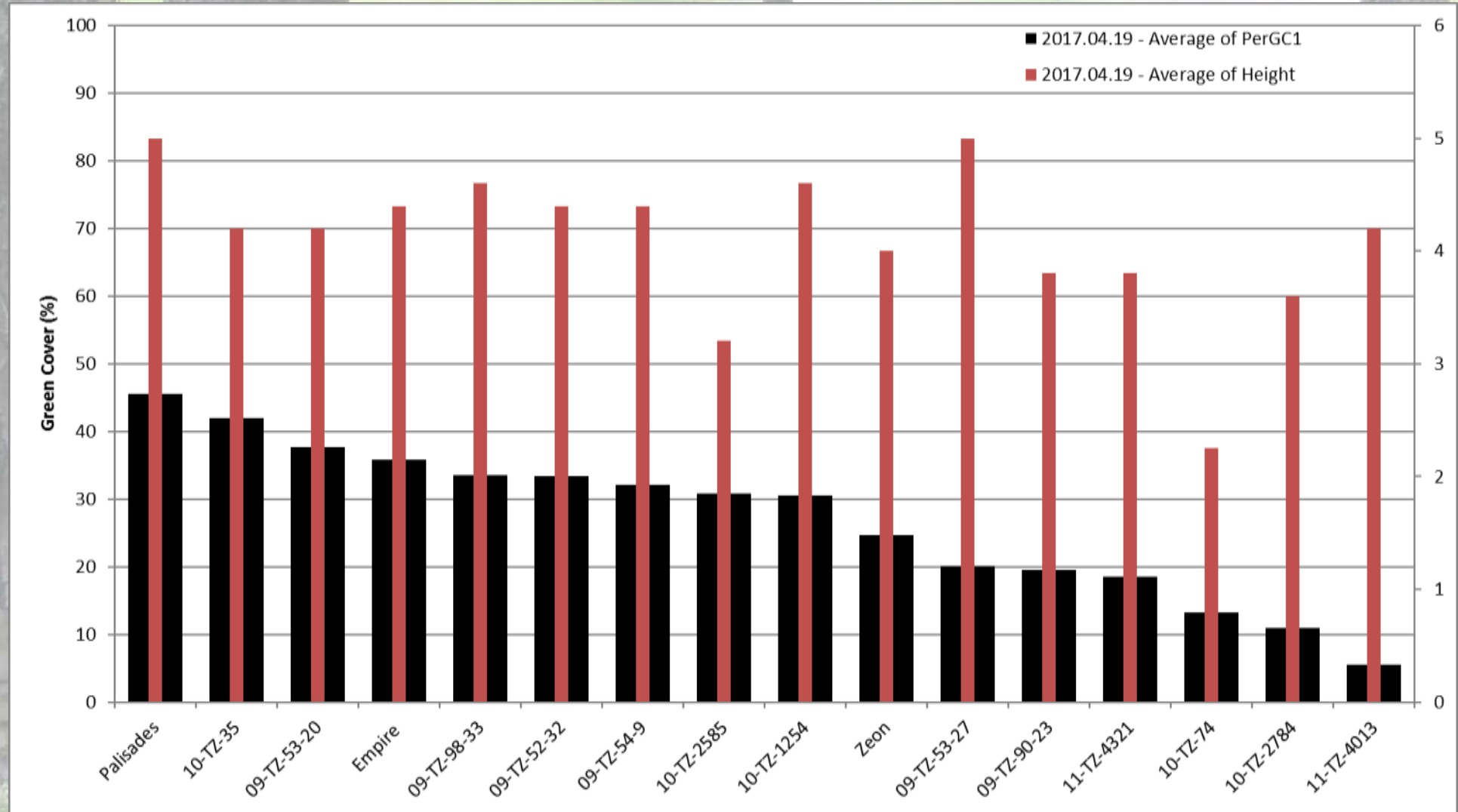
Bermudagrass



St. Augustinegrass



Zoysiagrass



A photograph of a well-maintained green lawn with several large, mature trees. The trees cast shadows on the grass. In the background, there are houses and a white fence. A dark SUV and a white pickup truck are parked on a street to the right. The overall scene is bright and sunny.

Questions??