

# Emerging diseases of centipedegrass on home lawns in the Gulf Coast states

Phillip L. Vines  
and  
Maria Tomaso-Peterson

68<sup>th</sup> Annual Southeastern Turfgrass Conference

April 29, 2014



MISSISSIPPI STATE  
UNIVERSITY™



Maria Tomaso-Peterson, PhD

Email: [mariat@pss.msstate.edu](mailto:mariat@pss.msstate.edu)



MISSISSIPPI STATE  
UNIVERSITY™





- Characteristics

- Origin

- Introduced to US in 1916

- Popularity is on the rise

- Utilization

# Issues Associated With Centipedegrass

- Management Issues:
  - Fertility
  - Irrigation
  - Mowing heights
- Disease Issues:
  - Large Patch (*Rhizoctonia solani*)
  - Take-All Root Rot (*Gaeumannomyces graminis* var. *graminis*)
  - Dollar Spot (*Sclerotinia homeocarpa*)
  - Nematodes
  - Anthracnose
    - Greater than 1/3 of all diagnoses at MSU-PDDL



# Centipedegrass Diseases: Time of Occurrence

SPRING

-Large patch

SUMMER

-Large patch

-Dollar spot

-Take all root rot

FALL

-Large patch

-Take all root rot

WINTER



# New and Emerging Diseases

- Anthracnose leaf spot  
(*Colletotrichum caudatum*)
- Centipedegrass anthracnose  
(*Colletotrichum eremochloae*)





# Anthracnose leaf spot (*Colletotrichum caudatum*)



# Anthracnose leaf spot (*Colletotrichum caudatum*)

- 2006
  - First described in Japan by Fuke, et al.
- 2012
  - First observed in US





# Anthracnose leaf spot (*Colletotrichum caudatum*)

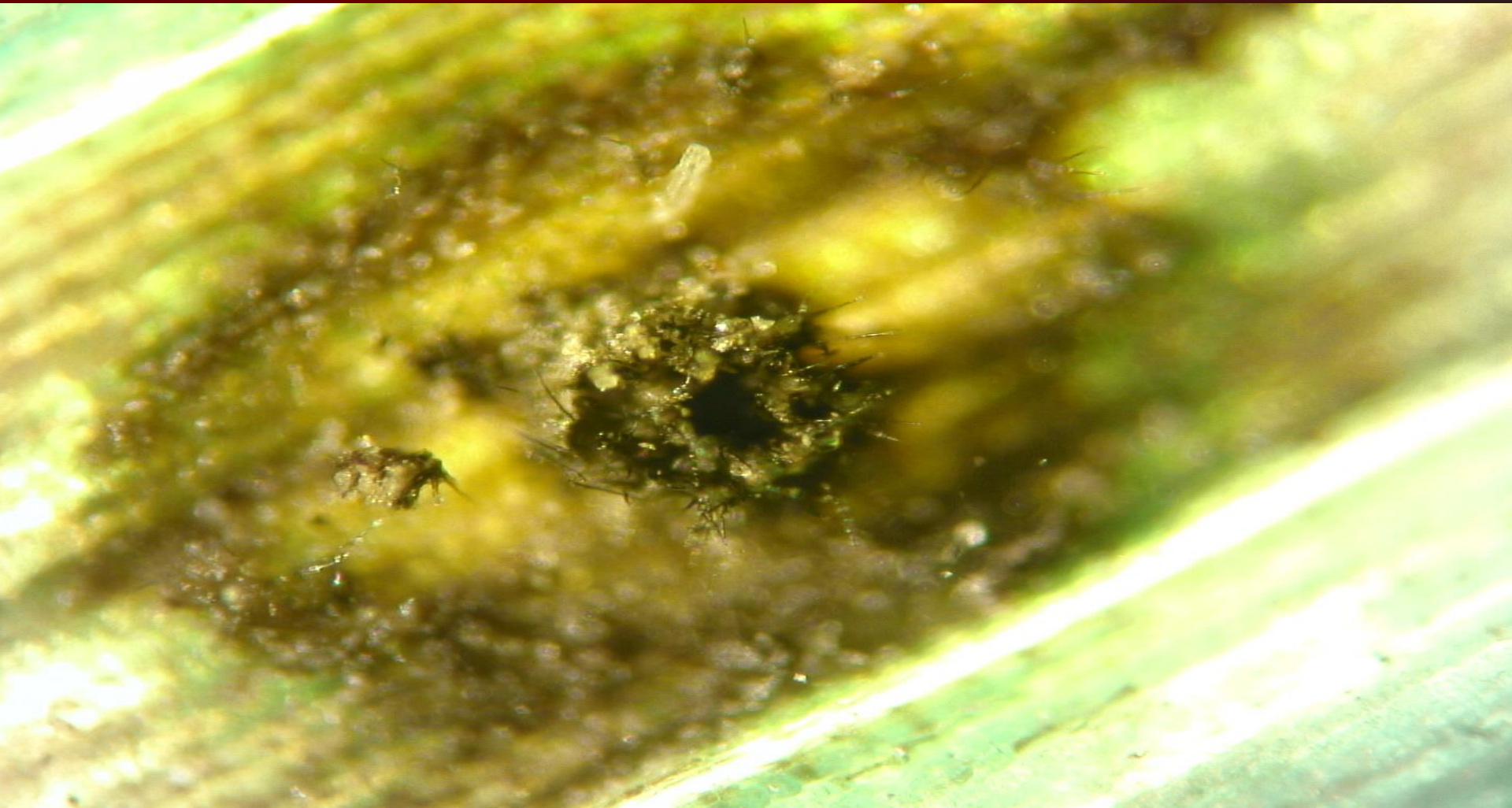




# Anthracnose leaf spot (*Colletotrichum caudatum*)

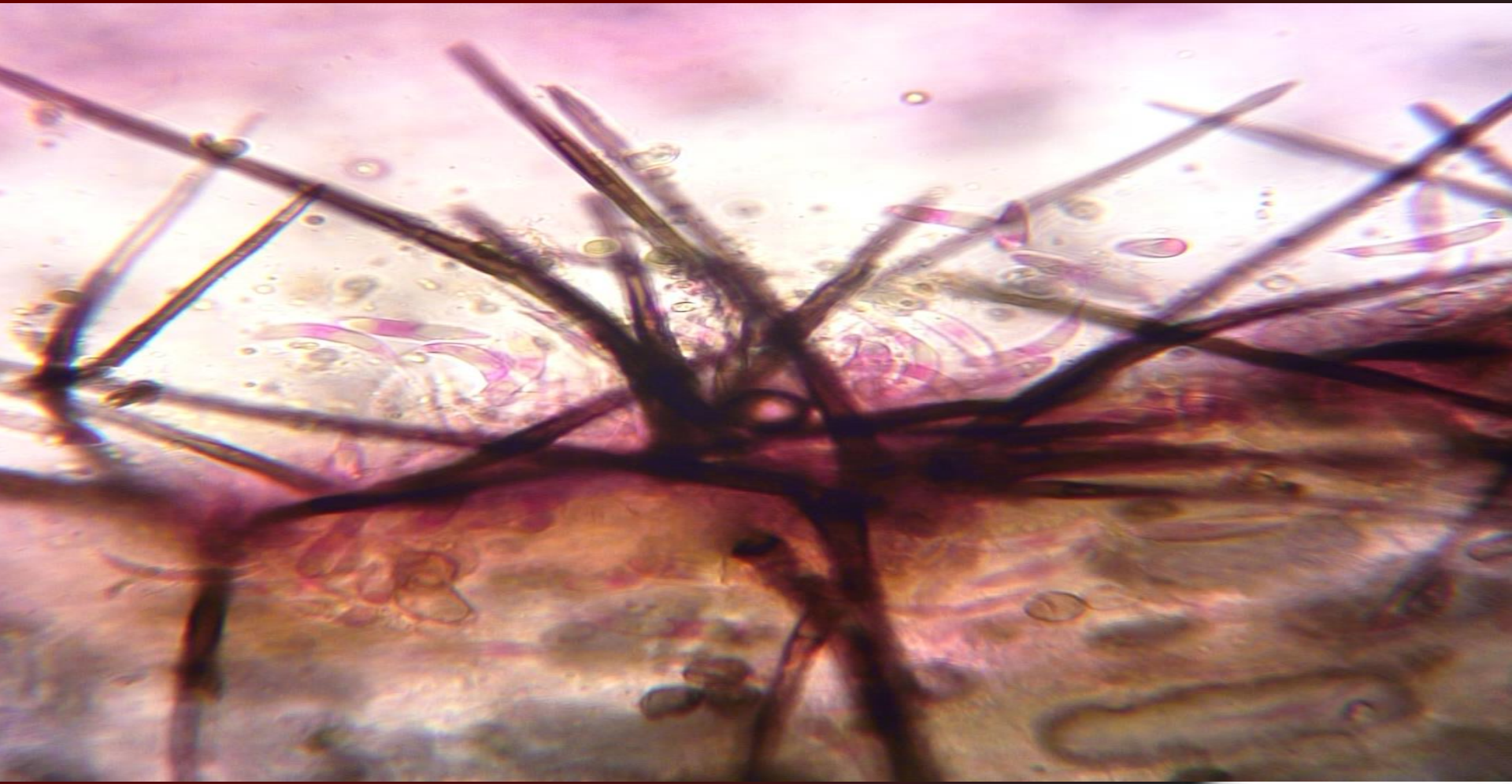


# Anthracnose leaf spot (*Colletotrichum caudatum*)





# Anthracnose leaf spot (*Colletotrichum caudatum*)



# Centipedegrass anthracnose (*Colletotrichum eremochloae*)





# Centipedegrass anthracnose (*Colletotrichum eremochloae*)

- 2007
  - First sample submitted to MSU-PDDL
  - Diagnosed as anthracnose by unknown causal organism
- 2012
  - *Colletotrichum eremochloae* described as the causal organism of centipedegrass anthracnose



# Centipedegrass anthracnose (*Colletotrichum eremochloae*)





# Centipedegrass anthracnose (*Colletotrichum eremochloae*)





# Centipedegrass anthracnose (*Colletotrichum eremochloae*)





# Centipedegrass anthracnose (*Colletotrichum eremochloae*)

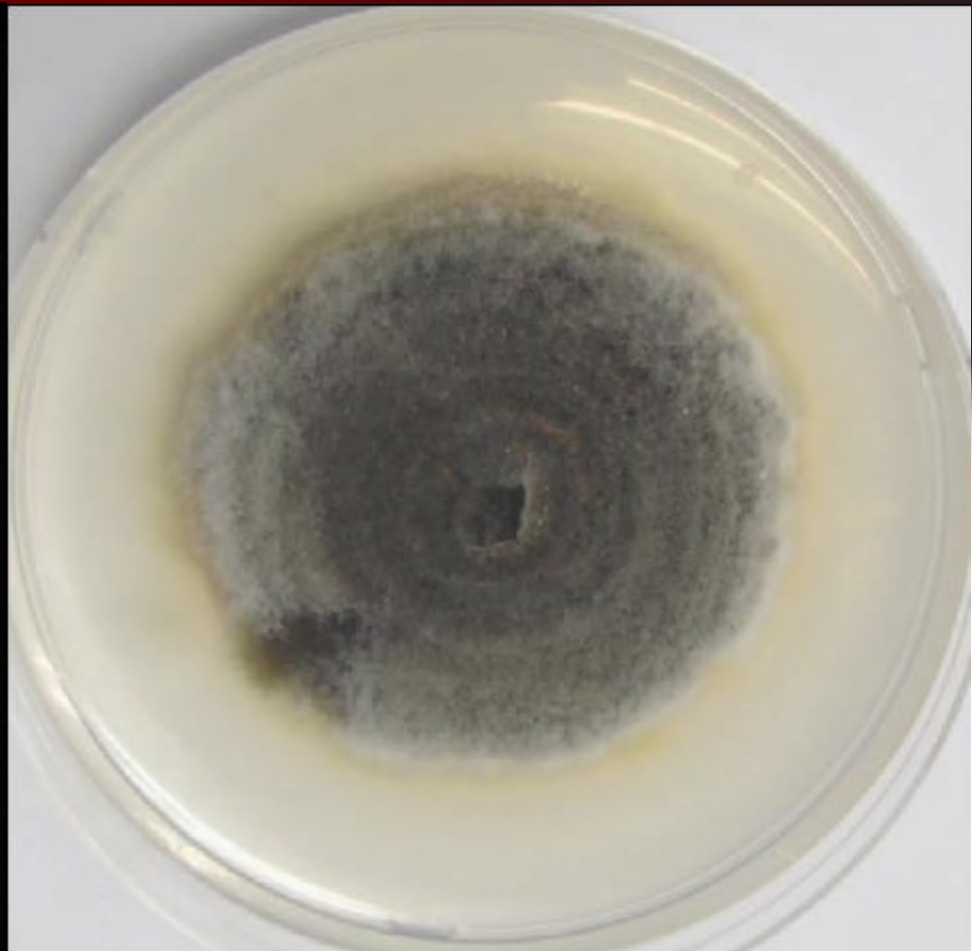
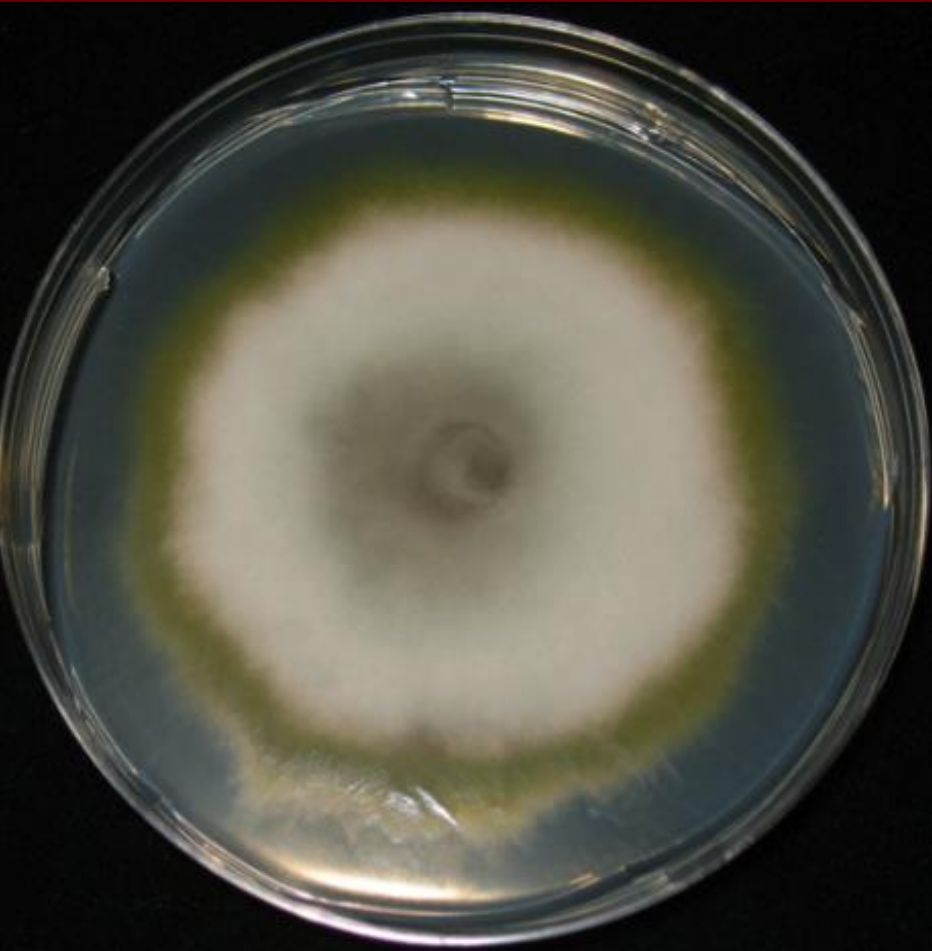




# Centipedegrass anthracnose (*Colletotrichum eremochloae*)



# Centipedegrass anthracnose (*Colletotrichum eremochloae*)

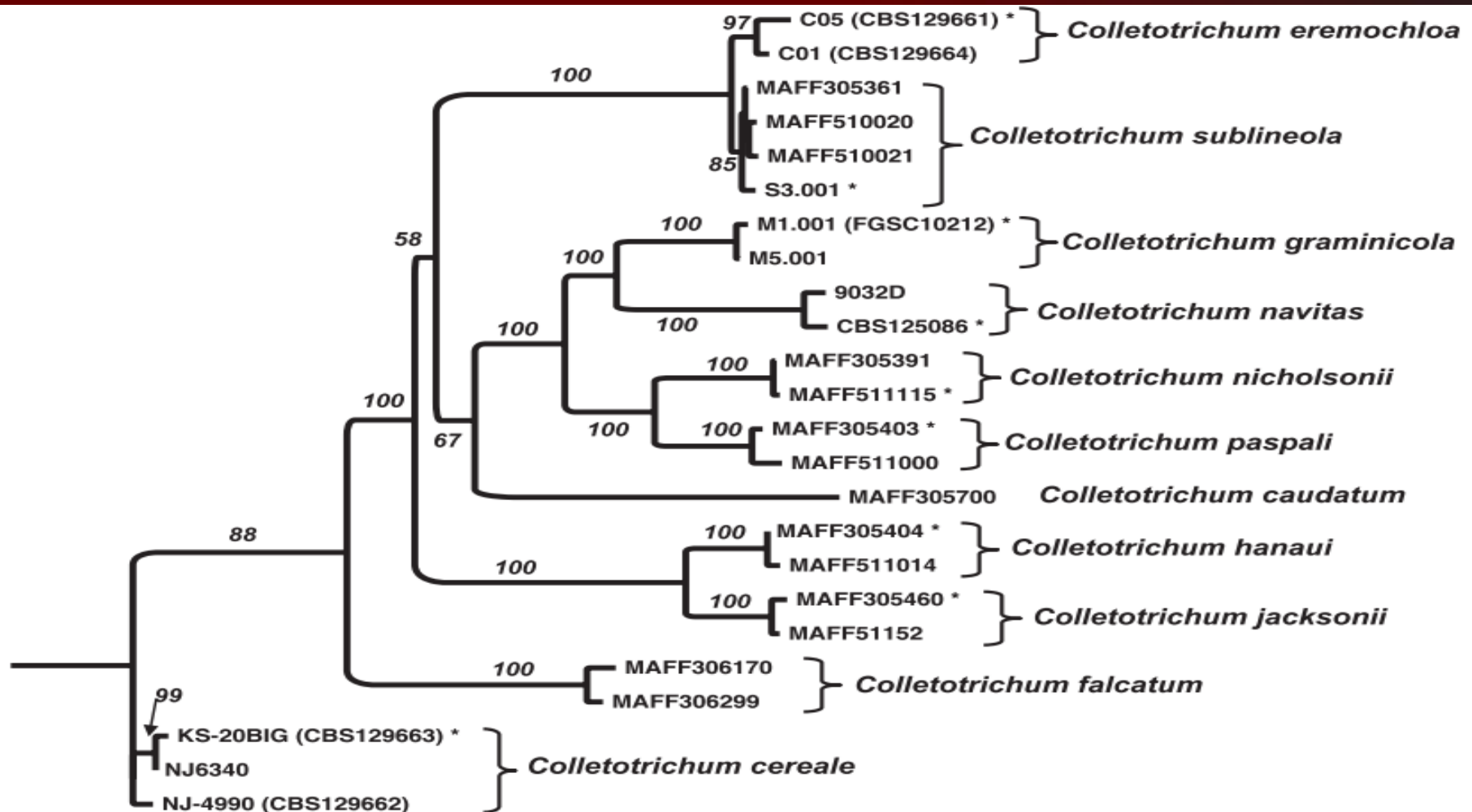




# Centipedegrass anthracnose (*Colletotrichum eremochloae*)



# Centipedegrass anthracnose (*Colletotrichum eremochloae*)





# Centipedegrass anthracnose (*Colletotrichum eremochloae*)





# Centipedegrass Diseases: Time of Occurrence

SPRING

- Large patch
- Centipedegrass anthracnose

SUMMER

- Large patch
- Dollar spot
- Take all root rot
- Centipedegrass anthracnose
- Anthracnose leaf spot

FALL

- Large patch
- Take all root rot

WINTER



# Control



What can I do to keep from getting  
disease?



# Preventative Control

- Fertilize properly (1-2 pounds N / 1,000 sq.ft. per year)
- Irrigate to prevent drought stress (1 inch of water/week)
- Mow at proper height of cut (1.5 inches)
- Remove thatch and excessive organic matter
- Make justifiable chemical applications



I've got disease! What can I do now?



MISSISSIPPI STATE  
UNIVERSITY™



# Curative Control

- Replant bare areas via seed, sod, or sprigs
- Make justifiable chemical applications



# Chemical control

- Large patch
- Take all root rot
- Dollar spot
- Centipedegrass anthracnose
- Anthracnose leaf spot



# Chemical control

- Large patch
- Take all root rot
- Dollar spot
- Centipedegrass anthracnose
- Anthracnose leaf spot





# Chemical control

- Large patch
- Take all root rot
- Dollar spot
- Centipedegrass anthracnose
- Anthracnose leaf spot



# Thank You

*68th Annual Southeastern*

## **TURFGRASS CONFERENCE**



Maria Tomaso-Peterson, PhD

Email: [mariat@pss.msstate.edu](mailto:mariat@pss.msstate.edu)



**MISSISSIPPI STATE**  
UNIVERSITY™